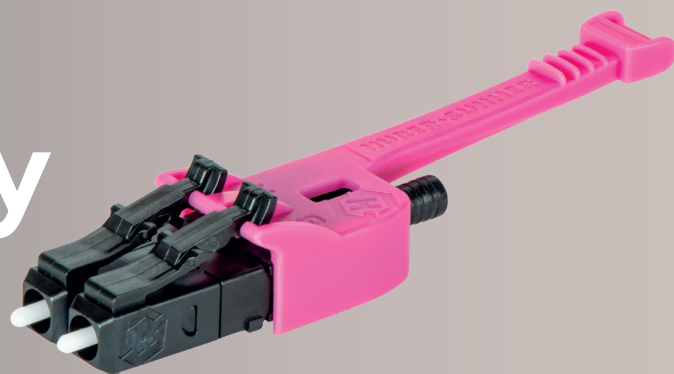
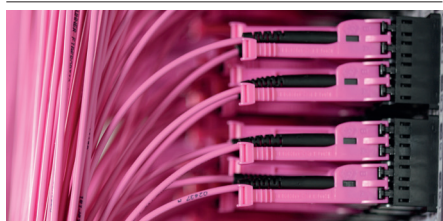


LC-XD Uniboot connectivity



06.2020

Highest density



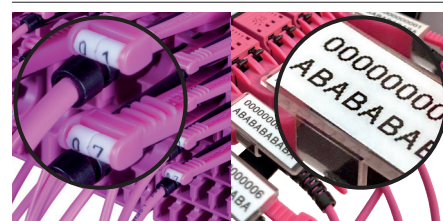
The LC-XD uniboot connector was designed for use in high-density environments and is very user-friendly for the operator.

Push-pull system



The revolutionary patented push-pull mechanism makes it the easiest LC connector to handle on site. It is best suited for rapidly-evolving data center and central office environments.

Structured labelling



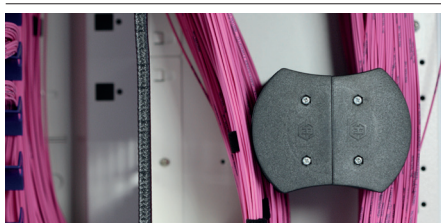
Extension levers with two-digit number or label clips improve identification, traceability and structuring. The labels can be created with standard label printers and easily retrofitted.

Polarity change



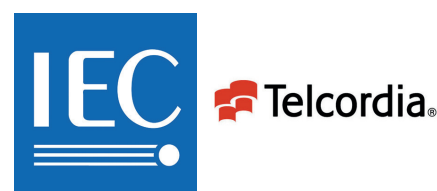
The high flexibility of the LC-XD means that polarity can be changed on site without any tools. Markings on the top of the connector indicate which polarity is currently used.

Reduced space usage



The uniboot design and bend optimised A2-fiber ensures a significant reduction of cable bulks and enables better traceability and fiber management.

Compatibility



The LC-XD connector is fully compliant with IEC 61754-20 and tested according to IEC 61753-1 Telcordia GR-326. Its axis distance can be automatically adjusted between standard (6.25 mm) and mini (5.25 mm) sizes.